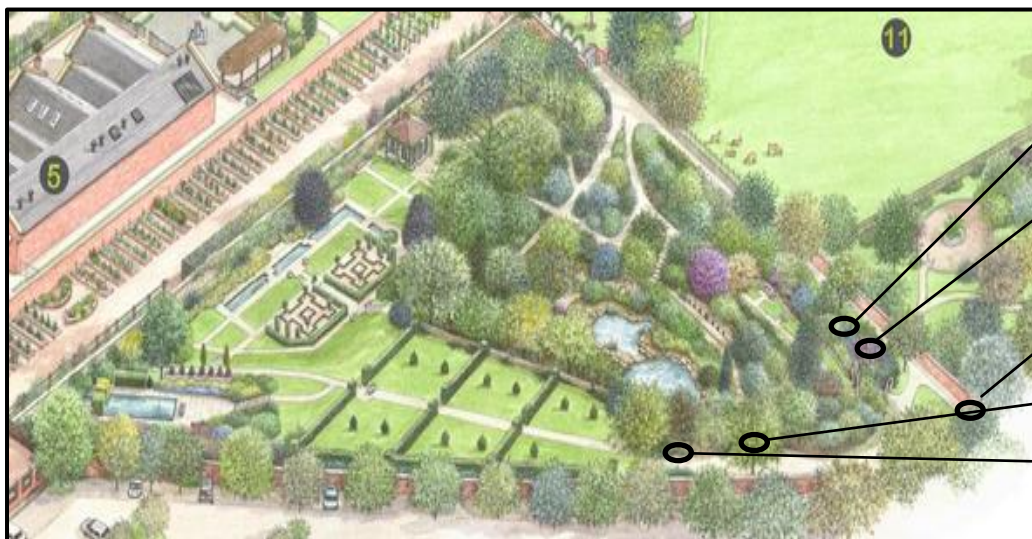


## Analysis of Bird Boxes used in 2018

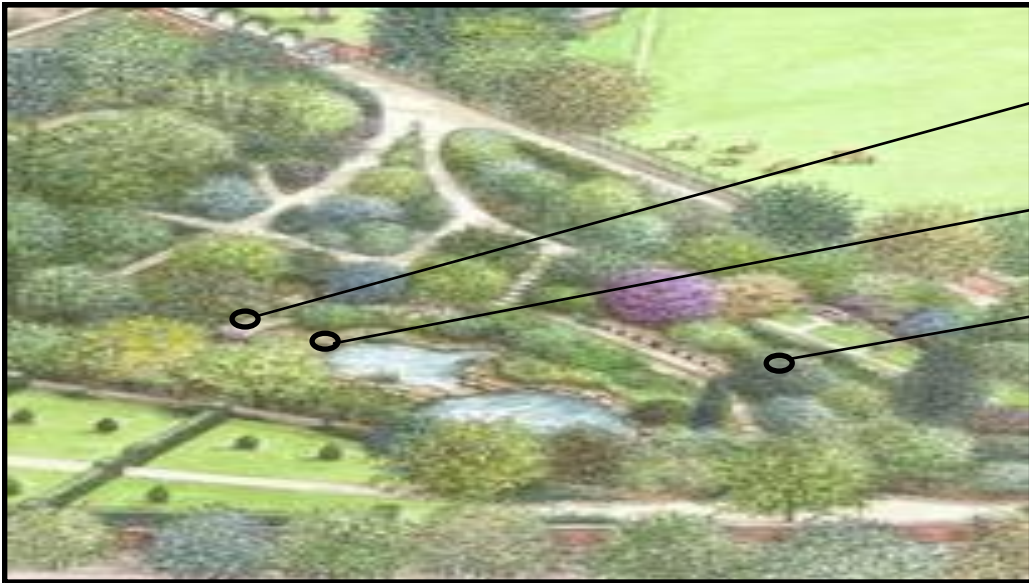


- Open nest in fallow deer paddock Num **27A SE**
- On the post in the corner of the fallow deer paddock Num **11 NE** and **12** facing SW (39149772)
- Tree at the end of the woodland walk Num **26 E** and **15 SE** (39149771)
- Tree on the circular path at the end of the woodland walk **14 NE** (39139771) Num **13** facing E (39139772)
- Along the woodland walk Num **25 S?** Low down & **16 SW** (39099771)
- Tree around the corner from the London Plane, Num **17 NW** & **18 SE** this is put much lower. (39079771)



- Just past the gate for the woodland walk Num **23 SE** and Num **20 NE** (39069774)
- Further along the path Num **22 NE** (39069773)
- Right in the corner past the path around the back of the bear pit Num **19 E** and Num **24 SE** (39069769)
- Tree on the path with the potential bat hole, Num **34 SE** (39039774)
- Further along this path before turning into formal gardens Num **10 SW** (39029774) check direction

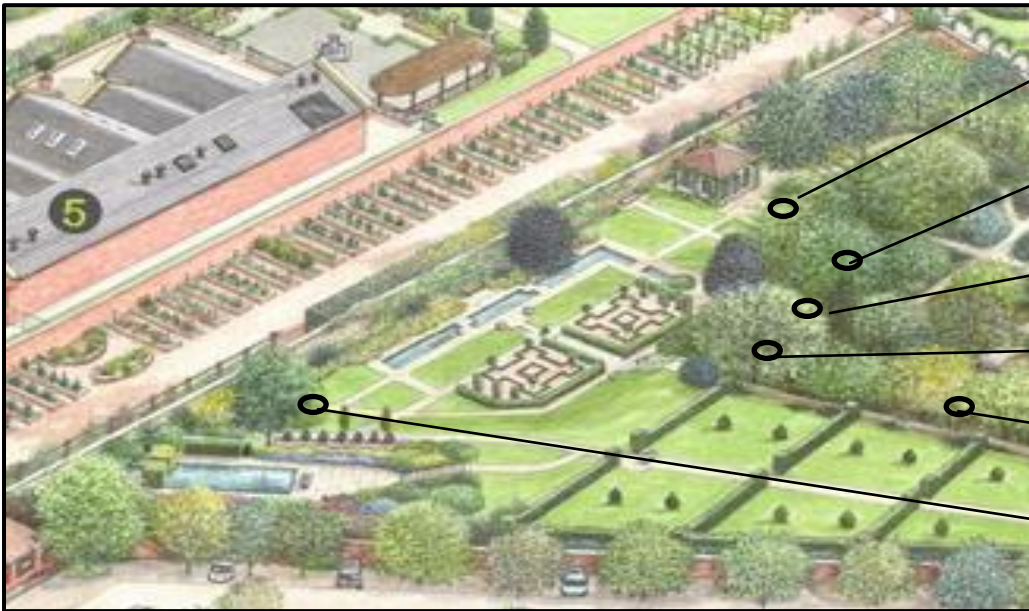
Directions given are the direction the bird box is facing; this is to test bird's preference. All bird boxes have a good flight path to the box. The ones put down low are for nesting Coal tits which prefer lower nest boxes.



Path leading up from the pond to the sunken ponds Num **29** NE and **4** N

In the corner off the path behind the ponds Num **2** NW and Num **3** N

At the end of the pond walk Num **1** W Num **28** SE (Num **28** is more visible from the path at the bottom of the bear pit)



Near the tearoom Num **30** S (39069780)

Above the Italian garden a bit secluded Num **31** SW and **5** SSE (39049780)

Middle tree Num **9** SW and Num **8** SSE (39049780)

First tree Num **30a** SSW (39039780)

Over the fence Num **6** NE (39029776)

On the Horse chestnut tree at the top of the stairs Num **7** SE (39019783)?

In the clear out: there were nests in 13,15,22,23,24,25,26,30,30A,32,34 -wasp nest num 26, bird skeleton in 30, double nest num 13 was in deer paddock

## WGC BIRD NEST BOX Changes 4<sup>th</sup> November 2018

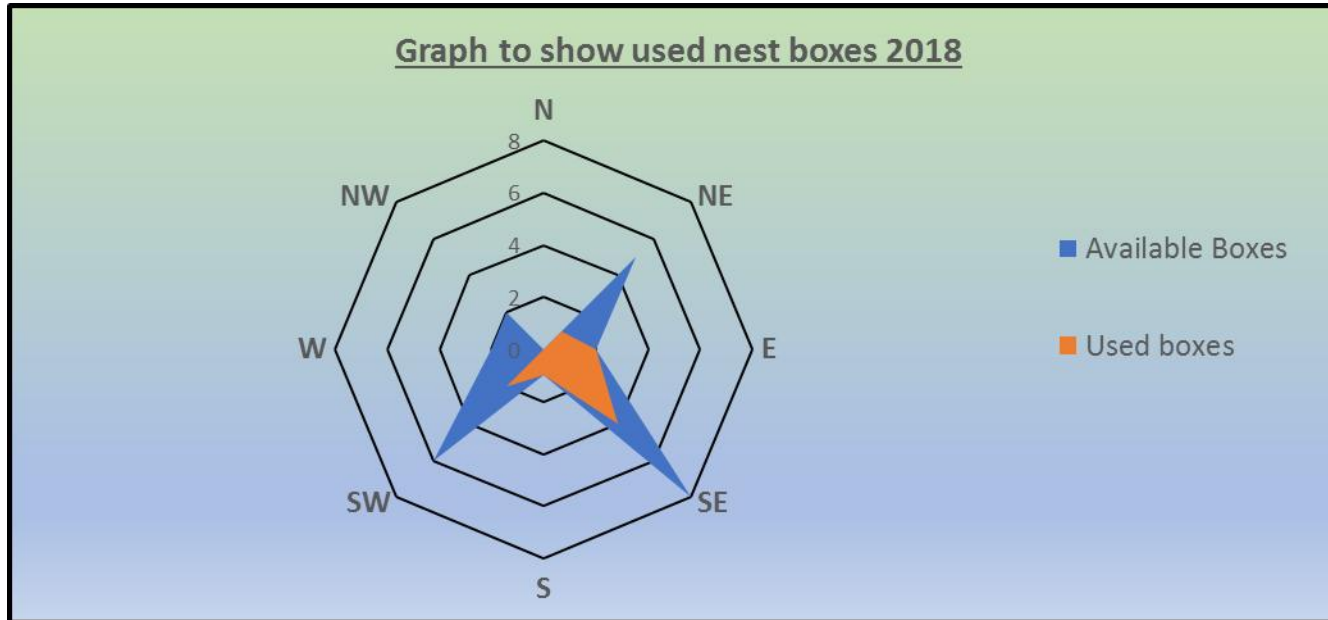
Box Number	Used Location	Found inside the box
1	Rock pools	Still to do
2	Rock pools	Still to do
3	Rock pools	Still to do
4	Rock pools	Still to do
5	Opp Mike Leng studio, empty	Moved to above Italian gardens next to 31Grid Reference SK3904 9780
6	On horse chestnut, came down	Moved to SK39029776 next to 32 put low down
7	On horse chestnut, empty	Grid reference SK3970 9783
8	In yew walk, empty	Moved to SK3904 9780 next to 9
9	In Yew Walk, empty	Grid reference SK3904 9780
10	On perimeter path, empty	Moved to SK3902 9774 next to 33
11	On post in Wood Walk, empty	Grid Reference SK3914 9772
12	On post in Wood Walk, empty	Grid Reference SK3914 9772
13	Wood Walk by 27 <b>used</b>	Had double nest, Moved from Deer Paddock to tree next to 14Grid Reference SK39139772
14	Wood Walk, empty	Grid Reference SK 3913 9771
15	Far corner of Wood Walk, <b>used</b>	Nest – probably blue titGrid Reference SK3914 9771
16	Half way Wood Walk, empty	Moved to low positionGrid Reference SK3909 9771
17	Start of Wood Walk, empty	Grid Reference SK3907 9771
18	Start of Wood Walk, empty	re positioned low Grid Reference SK3907 9771
19	Next to top door, empty	Grid Reference SK3906 9769
20	Main path Wood Walk, empty	Grid Reference SK3906 9774
21	<b>GONE</b>	
22	Near gate Wood Walk, <b>used</b>	Nest – probably blue tit with clutch of addled eggsGrid Reference SK3905 9770
23	Main path near Wood Walk, <b>used</b>	Nest – probably blue tit, had dead moth in itGrid Reference SK3906 9774
24	Next to top door, <b>used</b>	Nest– probably blue tit with grubs and several addled eggsGrid Reference SK3906 9769
25	Half way Wood Walk, <b>used</b>	Nest probably blue tit or robinGrid Reference SK3909 9771
26	Far corner of Wood Walk, <b>used</b>	Wasp nest on top of bird nestGrid Reference SK3914 9771
27	<b>NO BOTTOM - REMOVED</b>	
28	Rock pools	Still to do
29	Rock pools	Still to do
30	Start of Yew Walk, <b>used</b>	Nest, grubs, spidersGrid Reference SK3906 9780
30A	In Yew Walk, <b>used</b>	Moved from opp Mike Leng studio. Nest, probably robin, with egg Grid Reference SK3903 9780
31	Above Italian Gardens, empty	Grid Reference Sk3904 9780
32	Ivy tree Yew Walk, <b>used</b>	Nest, top rotted REMOVED – replaced with 6, placed low Grid Reference SK3903 9777
33	Start of Yew Walk, <b>GONE</b>	Replaced with 10Grid Reference SK3902 9774
34	On perimeter path, <b>used</b>	Nest – probably blue tit, spiders in itGrid Reference SK3903 9774

## Summary:

11 boxes used out of 36 boxes, 7 boxes still to do

3 boxes removed due to damage 21,27 & 33

11/26 = 42% percentage uptake of boxes so far with 7 to check.



	N	NE	E	SE	S	SW	W	NW	Total
<b>Actual Boxes</b>	2	6	3	11	1	7	3	3	36
<b>To be done</b>	2	1		2			1	1	7
<b>Damaged</b>			1	1		1			3
<b>Available</b>	0	5	2	8	1	6	2	2	26
<b>Actual Used</b>		1	2	4	1	2		1	11
<b>% Used</b>	0%	20%	100%	50%	100%	33%	0%	50%	42%